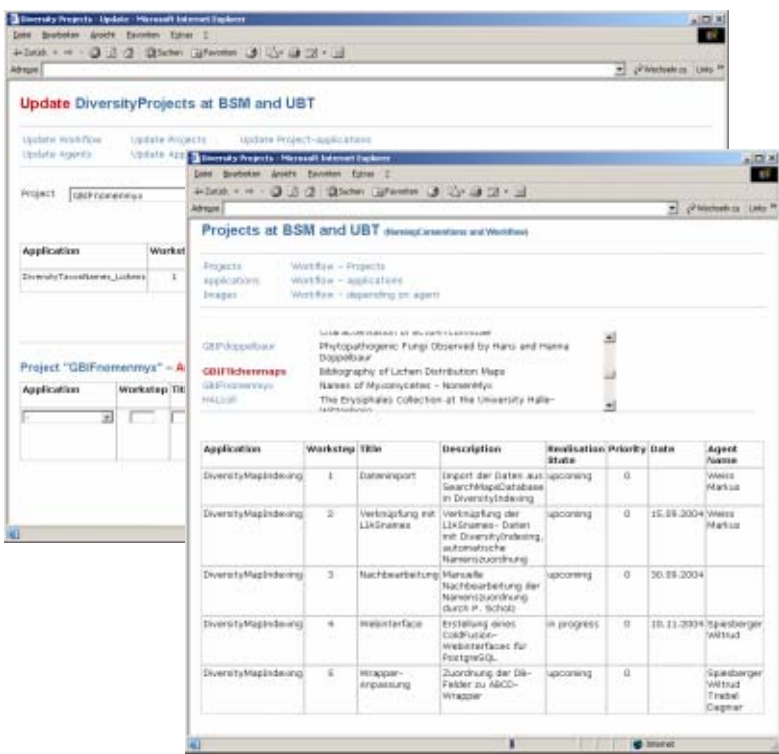
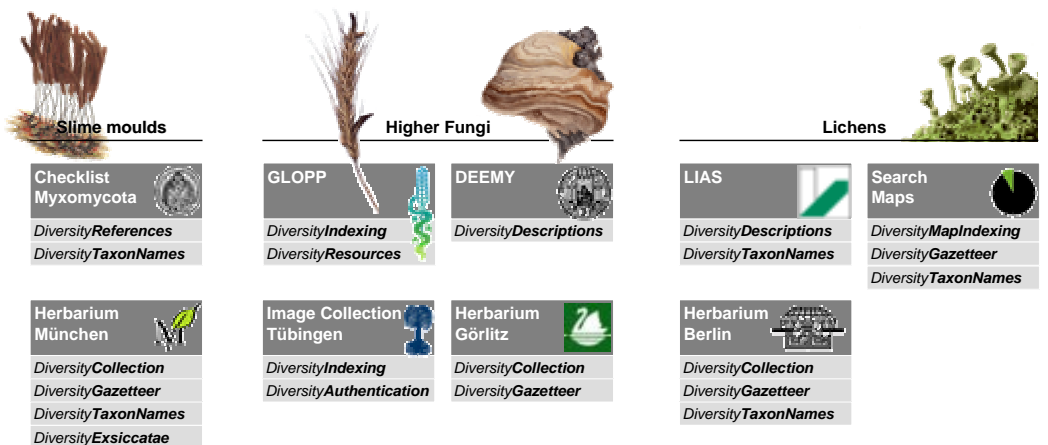


D. Triebel¹, W. Spiesberger¹, M. Weiss¹, J. Ingenhaag¹, D. Neubacher², G. Rambold²

¹ Botanische Staatssammlung München, Menzinger Straße 67, 80638 München, Germany
² Universität Bayreuth, Abt. Mykologie, Universitätsstraße 30 – NW 1, 95440 Bayreuth, Germany

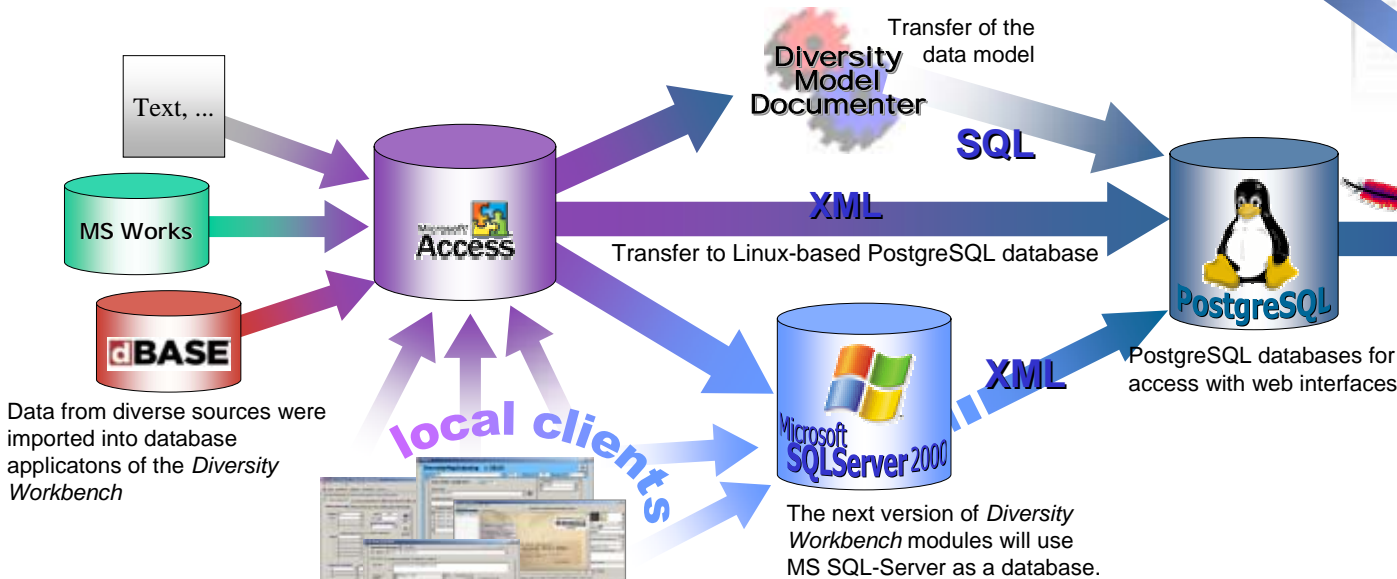
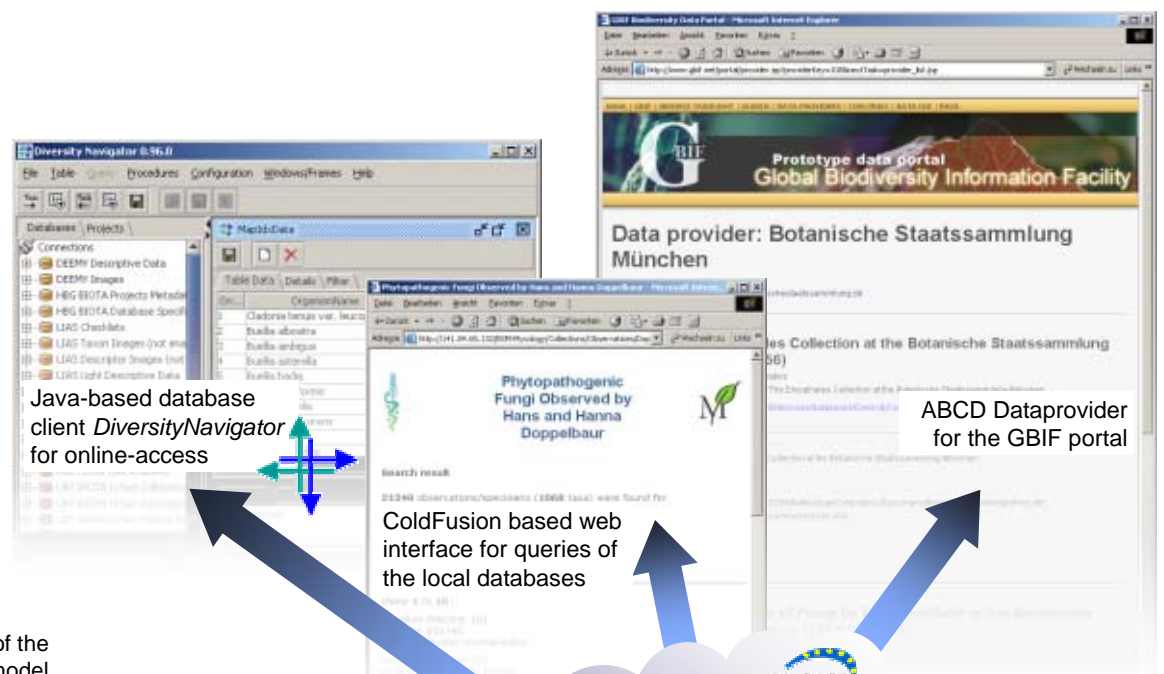
The German GBIF Node for Mycology was installed as service centre for mycological and lichenological biodiversity data in Germany. Starting in October 2002, the node project administrated a server network, gave technical as well as scientific advice to the individual sub-projects, transferred data from proprietary databases into database components of the *Diversity Workbench*, developed special web interfaces with search function, and built up a sustainable infrastructure that guarantees long-term maintenance of the GBIF-D node.

GBIF-D Mycology projects and *Diversity Workbench* components



The German mycological network started with 9 partner institutions and 11 sub-projects, 9 of which are collecting and providing biodiversity data. The general concept is to collect and present online a large amount of high quality data especially from ecologically and commercially important organisms. The database structure is based on the *Diversity Workbench* database suite, being partly based on developments accomplished during the GLOPP project (BIOLOG Biodiversity Informatics). A special *Diversity Workbench* subproject is devoted to the GBIF relevant design of database applications.

A project management system for special organizational requirements of the node (*DiversityProjects*) was designed and built up.



Data from diverse sources were imported into database applications of the *Diversity Workbench*

For editing the data local clients were developed

Links to publications of the GBIF-D Mycology Node are accessible via the portal www.gbif-mycology.de

