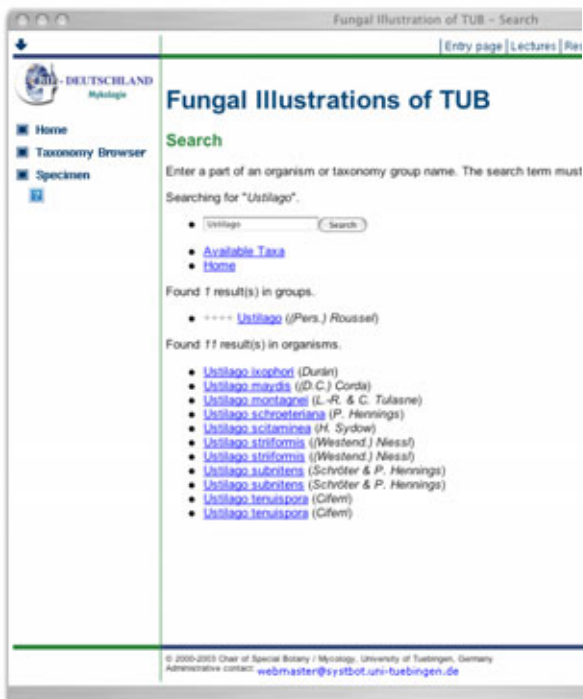




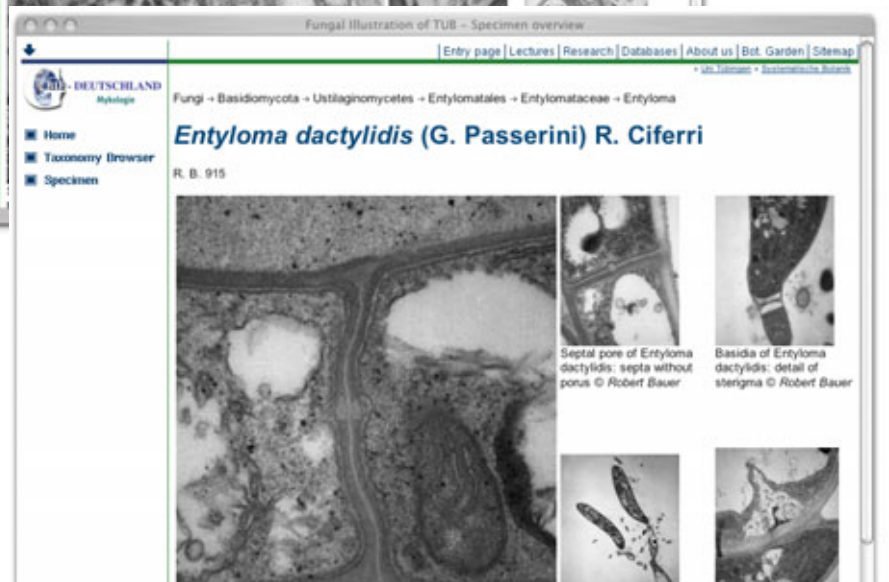
D. Begerow, R. Bauer, F. Oberwinkler  
Universität Tübingen, Lehrstuhl Spezielle Botanik/Mykologie,  
Auf der Morgenstelle 1, D-72076 Tübingen, Germany

Based on the "Digital Exsiccate of fungi" we went on developing a web-based database compatible and connected to the DiversityWorkbench modules. At the present stage we have included 1.800 drawings and 1.000 TEM photographs. The pictures are presented in different qualities including high resolution for further scientific use. They are kept in a PostgreSQL database and the webinterface is realized in PHP. The ongoing project will connect this database with Diversity Workbench modules and finally the illustrations will be available together with morphological descriptions and reference data.



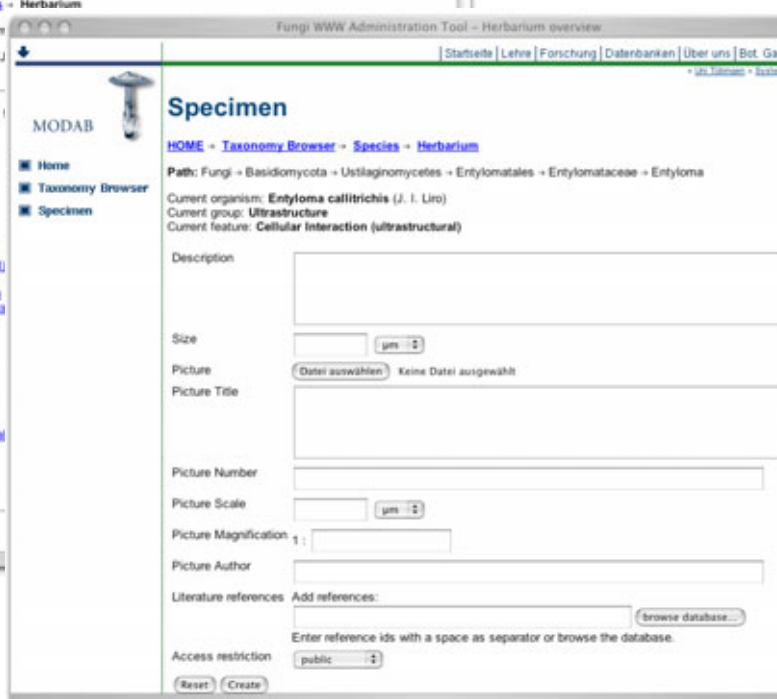
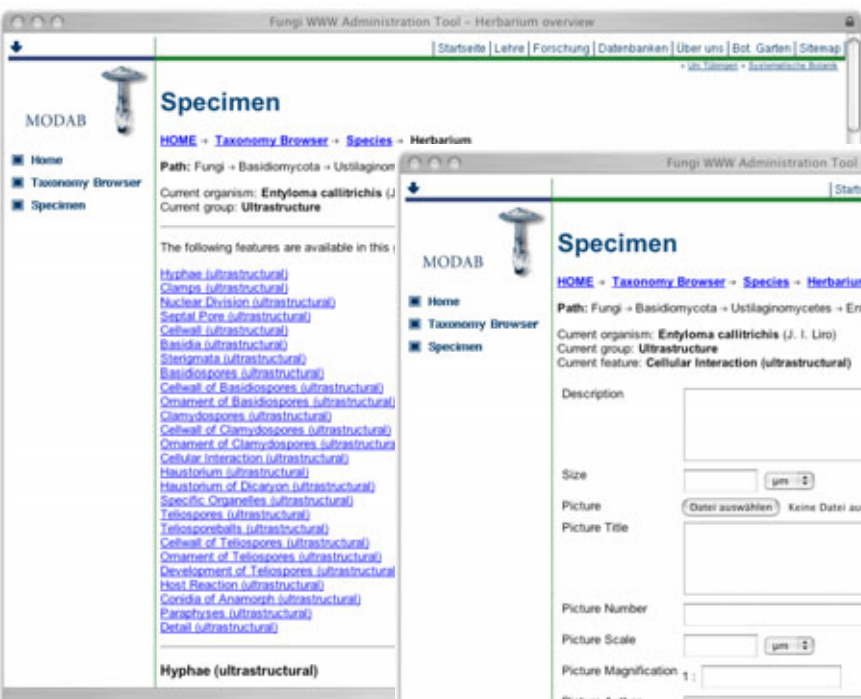
### Abstract:

A special collection of some 3000 illustrations obtained from morphological and ultrastructural studies of fungi is digitalised, the data are included in a DiversityWorkbench compatible PostgreSQL database and presented via PHP interfaces in the internet. The collection includes high quality hand drawings of microscopic examinations and unique TEM photographs from ultrastructural studies.



Since the availability of transmission electron microscopy in Tübingen this technique became very important for phylogenetic analyses. Ultrastructural studies about hyphal walls, septal pores, parasitic interaction, specialized organelles and nuclear behaviour resulted in over 80.000 photographs. Up to now only a small amount of these illustrations is available to the scientific community outside of Tübingen. Therefore we included in this project not only drawings, but also photographs of TEM studies.

In the first step we try to get an overview of different taxa by important characters like porous structure. For the smut fungi, which were already digitalized in the GLOPP project, we include available data of the cellular interaction. At the end of the project, we will combine the different data using different modules of the Diversity Workbench.



Screenshots of different pages of the website in Tübingen showing Search results, available features, data input and output of data.

<http://www.mycology.uni-tuebingen.de/databases/gbif/>